

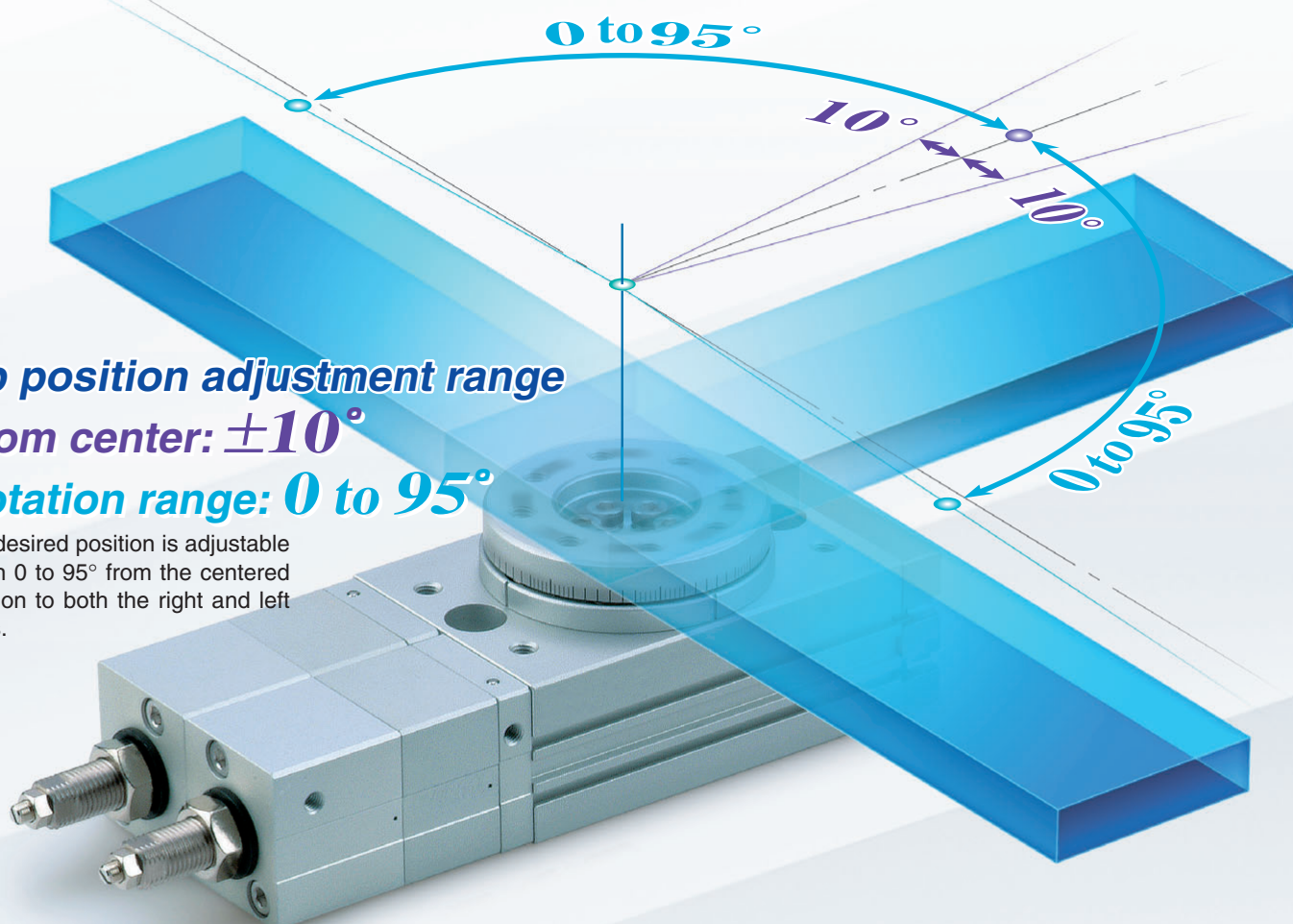
3-Position Rotary Table

Stop position adjustment range

● **From center: $\pm 10^\circ$**

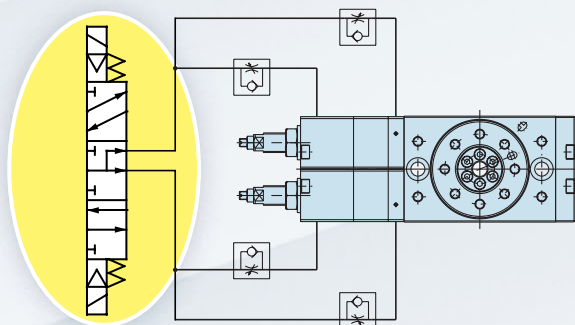
● **Rotation range: 0 to 95°**

The desired position is adjustable within 0 to 95° from the centered position to both the right and left sides.

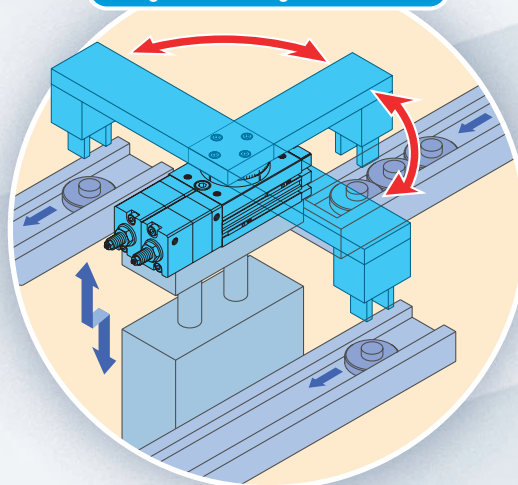


Can be operated by a single valve.

Controllable with one 3-position solenoid valve.



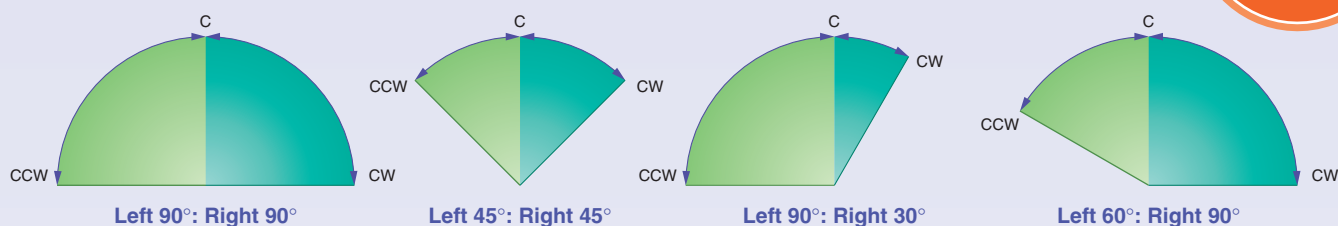
Sorting work to the right and/or left side



Coming soon!

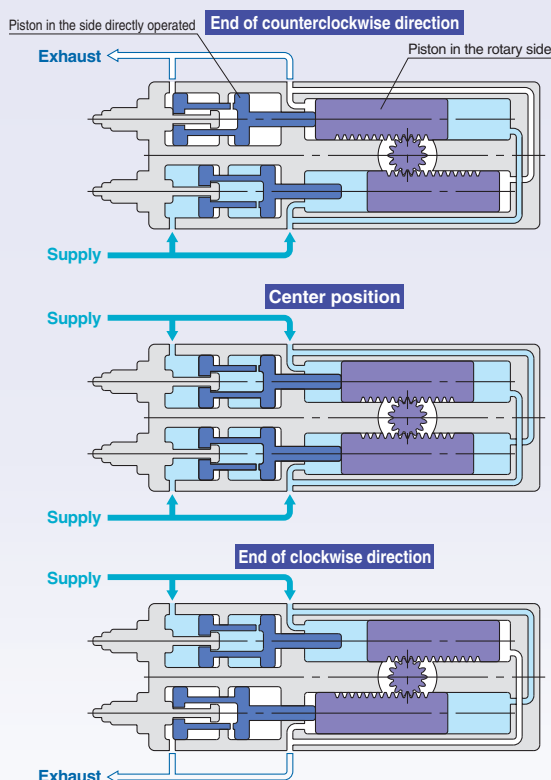
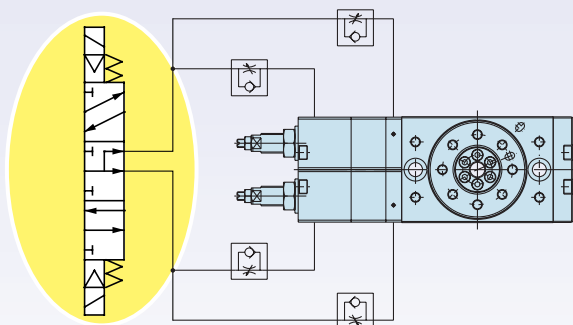
Example of Stop Position Settings

Angle adjustable as shown below. (CCW: Counterclockwise, C: Center, CW: Clockwise)



Working Principle

3-position, 5-port solenoid valve (pressure center) is used. When the solenoid valve is center-positioned to supply air with all ports on the 3-position rotary table, the pistons in the rotary side receive an even pressure, resulting in zero thrust. The pistons then slide to the center position due to the thrust from the pistons in the side directly operated. The motion stops when the double piston in the side directly operated makes contact with the pistons in the rotary side.

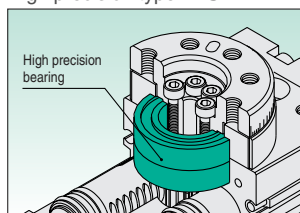
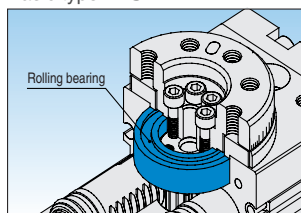


■ A load can be mounted directly on the table.

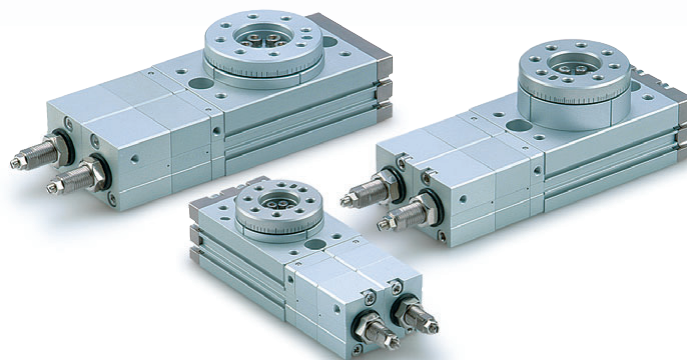
■ High precision type is also available in addition to the basic type.

Basic type: **MSZB**

High precision type: **MSZA**



Model	Size	Torque (N·m)	Port size
Basic type MSZB	10	1	M5 x 0.8
	20	2	
High precision type MSZA	30	3	
	50	5	



SMC Corporation

1-16-4 Shimbashi, Minato-ku, Tokyo 105-8659 JAPAN

Tel: 03-3502-2740 Fax: 03-3508-2480

URL <http://www.smcworld.com>

© 2005 SMC Corporation All Rights Reserved

Specifications are subject to change without prior notice and any obligation on the part of the manufacturer.

D-KS

1st printing JQ printing JQ 120KS Printed in Japan.

This pamphlet is printed on recycled paper with concern for the global environment.